

Adaptive Multistage Image Enhancement



Intelligent

Optimized

Adaptive

Experience the amazing difference that XView technology can make

Every ultrasound user knows that high levels of speckle, or 'noise', in an ultrasound image make accurate diagnoses more difficult and time-consuming.

XView is Esaote's revolutionary speckle reduction technology that improves image quality during the acquisition, processing and display stages.

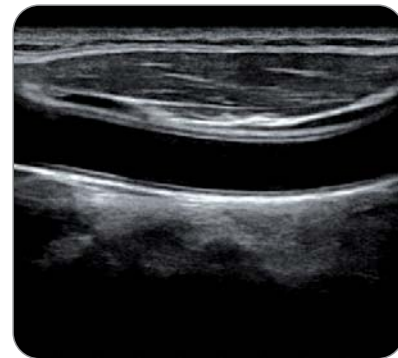
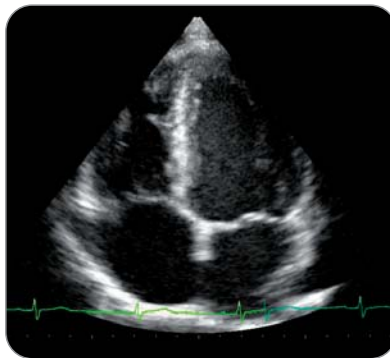
XView uses aspects of resolution, post-processing and averaging image enhancement techniques, but without any negative manipulation of the final image or loss of frame rate.

Available with various Esaote ultrasound systems, XView dramatically enhances tissue margins and conspicuity in multiple applications and with all probes, increasing diagnostic confidence.

XView is:

- > **Intelligent**
- > **Adaptive**
- > **Optimized**

You won't believe your eyes



> Intelligent

XView analyzes the image, recognizes what is speckle and what is relevant information, performs the necessary adjustments both at the acquisition stage and the processing level, suppresses the speckle and enhances the readability of the image.

> Adaptive

During acquisition, XView uses different techniques in order to produce as little speckle as possible. If during acquisition, the image cannot be adjusted optimally, XView automatically changes an algorithm in the processing stage, further changing the acquisition data at another time. The dynamic nature of XView produces the best possible speckle reduction ever.

> Optimized

XView removes speckle, while the information necessary for the diagnostic image is preserved and enhanced. Processed image data from both the part of the image previously affected by speckle and the part carrying the required information are combined to reconstruct the entire image and optimize the result.

esaote